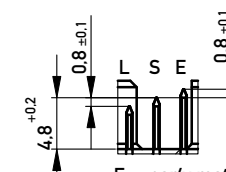
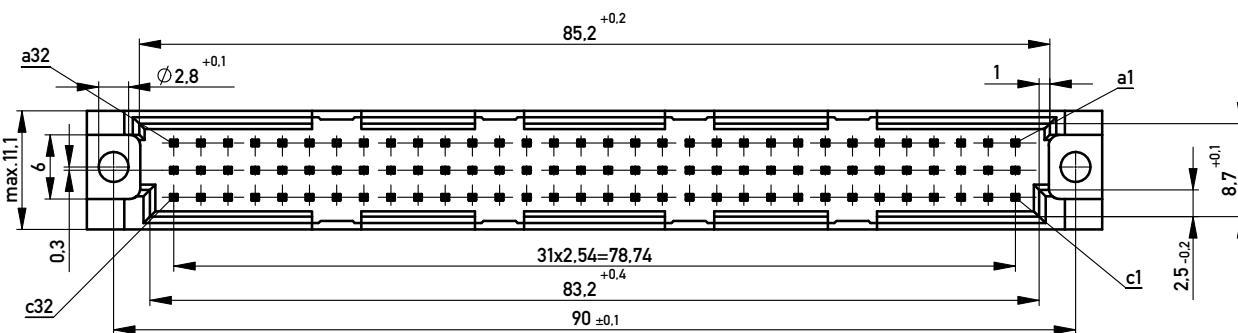


Stecklänge / mating length



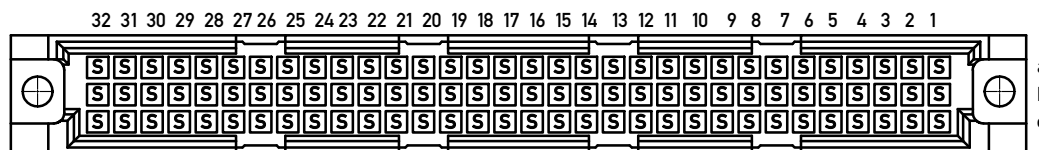
E = early mate, late break / voreilend  
S = standard  
L = late mate, early break / nacheilend



Lötanschluß 0,6x0,6mm /  
Solder Terminal 0,6x0,6mm  
Isolierwerkstoff / housing material : PBT GF 30  
Bauart 4 / type 4

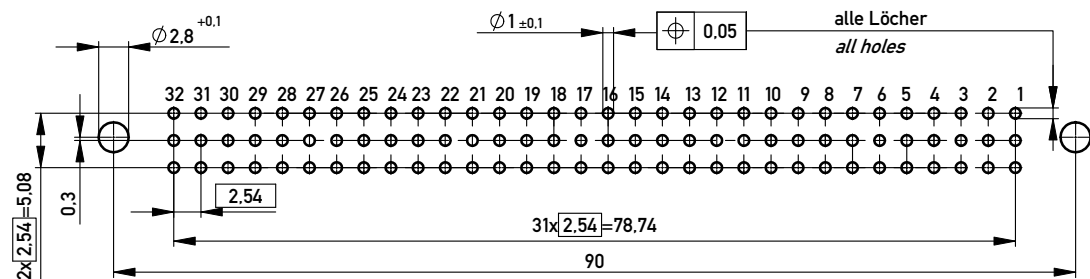
Anforderungsstufe 2 = 400 Steckzyklen / performance class 2 = 400 mating cycles  
Fehlende Maße und Angaben nach IEC 60 603-2 / DIN EN 60 603-2  
Missing information and dimensions per IEC 60 603-2 / DIN EN 60 603-2

Bestückungsplan / contact layout



Bedruckung siehe Zeichnung 294905  
Marking see drawing 294905

Leiterplatten-Lochbild / PCB drillhole pattern



Copyright by ERNI GmbH.  
Proprietary notice pursuant to ISO 16016 to be observed.

Information:		Tolerances	All Dimensions in mm	Scale 2:1
All rights reserved. Only for Information. To ensure that this is the latest version of this drawing, please contact one of the ERNI companies before using.		Subject to modification without prior notice. Drawing will not be updated.		Designation <b>Messerleiste R 96 Löt</b> <b>Male Connector R 96 Solder</b>
www.ERNI.com		<b>374000</b>		I A3
B	15.02.2010	Class		STVR
Index	Date			